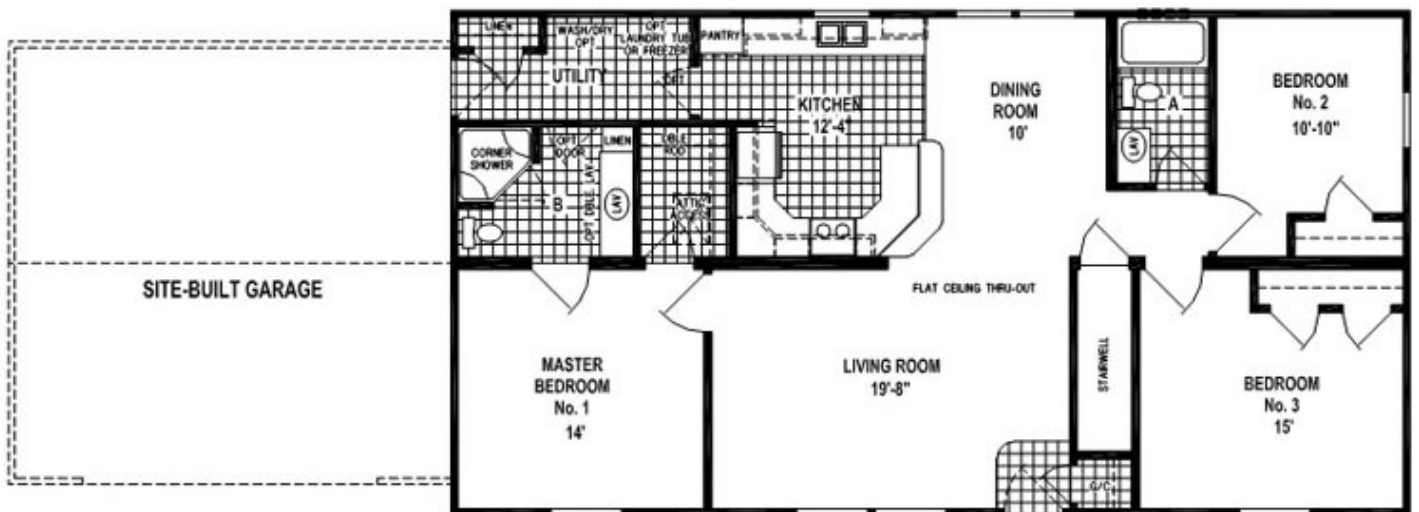




Model #C600MA
 1438 square feet
 3 beds, 2 baths

PRICE INCLUDES:
 Delivery
 Installed on your basement
 Blueprints
 Post jacks
 Basement stairs
 Tax



Model #C600MA

1438 square feet

3 beds, 2 baths

C600MA**Base Price****\$81,410****This home displays the following options:**

9' Flat Ceiling	\$1,040
6- Lineals, all WDS except glass block	\$150
Floor Vinyl Charges - DR	\$70
1/2" Rebond Carpet Pad	\$115
Painted Walls -DR	\$200
Wire/Dual Switch LR Paddle Fan - Center	\$50
3 way switch for BR1	\$20
2-Pendant Lights Over Snack Bar	\$90
5 - Eyeball Lights in KIT Soffit (extra)	\$300
Extra Patio Light - F. Door	\$40
6 - Smoke/CO Alarm Combo (dual sensor)	\$390
Mandatory 2008 NEC	\$300
Ivory Deco Accent Inserts	\$110
GEM-LOC Edging - KIT	\$290
25 1/2" Soffits in Kitchen	\$132
Whirlpool Pkg in kitchen	\$2,610
Bump out Kitchen Sink	\$125
Slide Out Wastebasket	\$90
GEM-LOC Edging - M. Bath	\$40
GEM-LOC Edging - H. Bath	\$35
CreditFire Door - Rear & Front Door	-\$10
Vinyl Patio Door - DR	\$475
Vert. Blinds at Patio Door	\$115
Wood Valance at Patio Door	\$50
Credit Window Not in DR	-\$75
Credit Omit Glass Block over Corner Shower	-\$45
4-Transoms Over all DS WDS	\$400
Draperies Pkg. Transom WD Appl	\$295
Opt. Door Util to Bath	\$135
Hardwood Trim Pkg.	\$890
Base Trim - All Cabs	\$55

Price of Options:**\$8,482****Total with options shown:****\$89,892**