



Lincoln Homes

QUALITY BUILT ON EXPERIENCE

Model #D502MA

1343 square feet

2 beds, 2 baths



PRICE INCLUDES:

Delivery

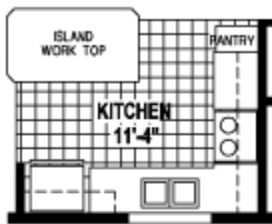
Installed on your basement

Blueprints

Post jacks

Basement stairs

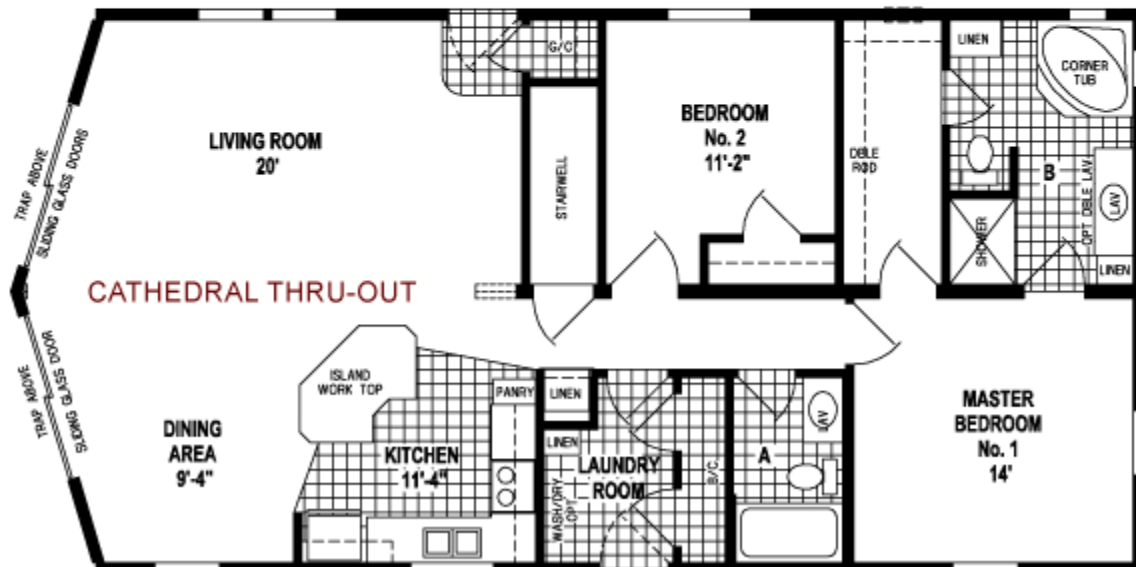
Tax



OPTION ISLAND KITCHEN



OPTION CORNER SHOWER BATH



Model #D502MA

1343 square feet

2 beds, 2 baths



Base Price

\$79,227

This home displays the following options:

Rounded Corners	\$100
Clay Window/Door Pkg	\$595
Ice Guard - 2 Rows	\$310
LP Smartside - Stained	\$3,200
Flooring Upgrade	\$100
Carpet Upgrade	\$522
Ship Loose 7' Carpet for Stairwell	\$224
Painted Walls - KIT/DR, ODS	\$275
Wood Fireplace - Chase	\$2,395
Direct Vent Air Inlet for Wood FP	\$40
Wire/Dual Switch/Paddle Fan/Light KIT - LR	\$145
Support/Dual Switch BRs Paddle Fans - 2	\$20
Exterior Phone Interface & 3 Jacks	\$110
TV Jacks - 2	\$35
Pendant Light Replace Eyeball - 3	\$180
Eyeball Lights - 3 Extra	\$180
Décor Light - Stairwell - 2	\$30
Counter - Jeweled Coral - KIT	\$350
Full Wall Ceramic - KIT	\$315
GEM-LOC Edging - KIT	\$315
GE Appliance Pkg 1, Black	\$2,885
GEM-LOC Edging - M. Bath	\$60
GEM-LOC Edging - H. Bath	\$50
Stool OH Cab H. Bath	\$75
38" Triview Med Cab - M. Bath	\$250
Steel with Arched Glass Fr. Door	\$275
Vert. Blind at Patio Door - 2	\$350
Drapery	\$375
Hardwood Trim Pkg	\$1,260
Hardwood Base Trim - KIT	\$75

Price of Options:

\$15,096

Total with options shown:

\$94,323

